



**f** LIKE US ON FACEBOOK  
/HotRodDiner

**📷** FOLLOW US ON INSTAGRAM  
@hotroddinernorthfleet

BREAKFAST MENU AVAILABLE FRIDAY - SUNDAY 9AM -11:30AM

## SET BREAKFASTS

NO SUBSTITUTES CAN BE MADE ON SET BREAKFASTS

<b>THE LIGHT BITE</b>	<b>6.95</b>
2 eggs, 2 bacon, toast and a tea or coffee	
<b>THE AVERAGE JOE</b>	<b>7.75</b>
1 egg, 1 bacon, 1 sausage, beans, toast and a tea or coffee	
<b>THE REGULAR</b>	<b>10.50</b>
2 eggs, 2 bacon, 2 sausages, toast and a tea or coffee	



2 eggs, 2 bacon, 2 sausages, 2 hash brown, mushrooms, beans or tomatoes, toast and a tea or coffee

**14.95**

<b>PANCAKE BREAKFAST</b>	<b>10.50</b>
3 american buttermilk pancakes with maple syrup, 1 egg, 1 bacon, 1 sausage and a tea or coffee	
<b>WAFFLE BREAKFAST</b>	<b>10.50</b>
Large american waffle with maple syrup, 1 egg, 1 bacon, 1 sausage and a tea or coffee	
<b>VEGGIE BREAKFAST</b> <span style="color: green;">V</span>	<b>9.95</b>
2 eggs, 2 quorn sausages, 1 hash brown, beans, toast and a tea or coffee	

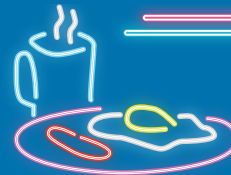
<b>THE ALL AMERICAN</b>	<b>13.50</b>
3 mini american pancakes, maple syrup, streaky bacon, tater tots, egg, sausage and a tea or coffee	

<b>HOT ROD OMELETTE</b>	<b>10.95</b>
Bacon, sausage, mushrooms, onions, peppers and cheese grilled on the hot plate and a tea or coffee	
<b>EGGS BENEDICT</b> <span style="color: green;">V</span>	<b>7.50</b>
Toasted muffin with poached eggs, hollandaise sauce, a dusting of paprika and a tea or coffee	
<b>ADD 2 BACON 2.00</b>	
<b>BACON PANCAKE STACK</b>	<b>11.95</b>
Stack of 3 american buttermilk pancakes, heaps of streaky bacon, maple syrup and a tea or coffee	
<b>BREAKFAST BURRITO</b>	<b>8.95</b>
Egg, bacon, sausage, peppers, onions and cheese in a soft tortilla wrap with salsa and a tea or coffee	
<b>DIRTY BIRD WAFFLE</b>	<b>9.95</b>
Maple glazed buttermilk chicken burger, streaky bacon & fried egg waffle sandwich and tea or coffee	

V VEGETARIAN

VG VEGAN N CONTAINS NUTS

If you require information about food allergens please ask a member of staff for advice. Gluten free options available.



## BUILD YOUR OWN BREAKFAST

<b>EGG</b>	<b>1.00</b>	<b>MUSHROOMS</b>	<b>1.50</b>
<b>BACON</b>	<b>1.25</b>	<b>TINNED TOMATOES</b>	<b>1.20</b>
<b>SAUSAGE</b>	<b>1.75</b>	<b>BLACK PUDDING</b>	<b>1.50</b>
<b>QUORN SAUSAGE</b>	<b>1.50</b>	<b>MUFFIN/ BAGEL</b>	<b>1.50</b>
<b>HASH BROWN</b>	<b>1.25</b>	<b>FRIES</b>	<b>3.50</b>
<b>TOAST</b>	<b>1.00</b>	<b>TATER TOTS</b>	<b>4.75</b>
<b>BEANS</b>	<b>1.20</b>	<b>ONION RINGS</b>	<b>4.50</b>

## FRENCH TOAST

<b>CLASSIC FRENCH</b> <span style="color: green;">V</span>	<b>8.95</b>
2 slices of thick cut French toast with blueberries & maple syrup	
<b>LEMON BERRY FRENCH</b> <span style="color: green;">V</span>	<b>9.95</b>
2 slices of thick cut French toast with strawberries, lemon drizzle & cream	
<b>NUTELLA FRENCH</b> <span style="color: green;">V</span> <span style="color: red;">N</span>	<b>10.95</b>
2 slices of thick cut French toast with Nutella, chopped nuts & cream	
<b>BISCOFF FRENCH SANDWICH</b> <span style="color: green;">V</span>	<b>10.95</b>
2 slices of thick cut French toast filled with biscoff spread, topped with toffee sauce & biscoff crumb, served with cream	
<b>MAPLE BACON FRENCH</b>	<b>12.00</b>
2 slices of thick cut French toast with crispy streaky bacon & maple syrup	
<b>FRENCH BREAKFAST</b>	<b>9.95</b>
1 slice of cut french toast, egg, bacon, sausage, maple syrup & a tea or coffee	

## CINNAMON TOAST

<b>CLASSIC CINNAMON</b> <span style="color: green;">V</span>	<b>4.95</b>
2 slices of thick cut cinnamon toast drizzled with icing sugar	
<b>NUTELLA CINNAMON</b> <span style="color: green;">V</span> <span style="color: red;">N</span>	<b>5.95</b>
2 slices of thick cut cinnamon toast drizzled with Nutella	
<b>WHITE CHOCOLATE CINNAMON</b> <span style="color: green;">V</span>	<b>5.95</b>
2 slices of thick cut cinnamon toast drizzled with white chocolate	

## MUFFINS & BAGELS

Choose either muffin or bagel

<b>SAUSAGE &amp; EGG</b>	<b>4.75</b>
Sausage patty, egg & cheese	
<b>DOUBLE SAUSAGE &amp; EGG</b>	<b>6.50</b>
2 sausage patties, egg & cheese	
<b>EGG &amp; BACON</b>	<b>5.50</b>
2 smoky bacon, egg & cheese	
<b>SAUSAGE, EGG &amp; BACON</b>	<b>6.00</b>
Sausage patty, egg, bacon & cheese	
<b>VEGGIE MUFFIN</b> <span style="color: green;">V</span>	<b>4.75</b>
Quorn patty, egg & cheese	



**f** LIKE US ON FACEBOOK  
/HotRodDiner

**📷** FOLLOW US ON INSTAGRAM  
@hotroddinernorthfleet

## WAFFLES

Our large American waffles are cooked to order and made with a traditional American buttermilk batter.

- BLUEBERRY & MAPLE** V 8.50  
Fresh blueberries, maple syrup and ice cream
- STRAWBERRY & NUTELLA** V N 8.95  
Fresh strawberries, Nutella and ice cream
- STRAWBERRY & WHITE CHOCOLATE** V 8.95  
Fresh strawberries, white chocolate sauce and ice cream
- BANOFFEE** V 8.50  
Fresh banana, toffee sauce and ice cream
- TOFFEE APPLE** V 8.95  
Homemade apple sauce, toffee sauce and ice cream
- CHERRY PIE** V 8.95  
Cherry sauce, crushed sweet pastry and ice cream
- LEMON MERINGUE** V 9.50  
Lemon curd, mini meringues, lemon drizzle sauce, crushed meringue and ice cream
- BISCOFF** V 8.95  
Crunchy biscoff spread, toffee sauce, crushed biscoff biscuits and ice cream
- ALL THE FRUITS** V 9.95  
Strawberries, banana, blueberries, maple syrup and ice cream

## PANCAKES

Our fluffy American pancakes are cooked to order and made with a traditional American buttermilk batter.

- MINI STACK** V 4.95  
3 Small pancakes with maple syrup and cream
- CLASSIC STACK** V 7.00  
3 large pancakes with maple syrup and cream
- BLUEBERRY & MAPLE STACK** V 8.50  
3 large pancakes with maple syrup, fresh blueberries and cream
- BISCOFF STACK** V 8.95  
3 large pancakes with crunchy biscoff spread, toffee sauce & crushed biscoff biscuits
- APPLE PIE STACK** V 8.95  
3 large pancakes with homemade apple sauce, crushed sweet pastry & cream

## CREATE YOUR OWN WAFFLES & PANCAKES

- 1 TOPPING SMALL 3.95 / LARGE 5.50
- 2 TOPPINGS SMALL 4.95 / LARGE 7.00
- 3 TOPPINGS SMALL 5.95 / LARGE 8.50

Thereafter an additional 50p per topping

- |                      |                   |                          |
|----------------------|-------------------|--------------------------|
| Chocolate sauce      | Cream             | Chocolate chips          |
| Toffee sauce         | Strawberries      | White choc chips         |
| Strawberry sauce     | Banana            | Crushed oreos            |
| Salted caramel sauce | Blueberries       | Crushed biscoff biscuits |
| Maple syrup          | Chopped nuts      |                          |
| White choc sauce     | Sprinkles         |                          |
| Nutella              | Mini marshmallows |                          |

ADD SOFT SERVE VANILLA ICE CREAM 2.00

## SOFT DRINKS

- |            |      |             |      |
|------------|------|-------------|------|
| PEPSI      | 3.50 | TANGO       | 3.20 |
| PEPSI MAX  | 3.20 | CREAM SODA  | 2.00 |
| DIET PEPSI | 3.20 | GINGER BEER | 2.00 |
| LEMONADE   | 3.20 |             |      |

## JUICES & WATER

- |                 |      |                |      |
|-----------------|------|----------------|------|
| ORANGE JUICE    | 3.00 | MANGO ICE TEA  | 2.75 |
| APPLE JUICE     | 3.00 | BOTTLE WATER   | 1.50 |
| PINEAPPLE JUICE | 3.00 | TONIC          | 1.50 |
| PEACH ICE TEA   | 2.75 | SLIMLINE TONIC | 1.50 |

## HOT DRINKS

- |                     |      |
|---------------------|------|
| TEA/DECAF           | 1.75 |
| FILTER COFFEE/DECAF | 2.00 |
| LATTE               | 2.50 |
| CAPPUCCINO          | 2.50 |

## SHAKES

Our famous shakes are handmade to order.  
ADD CREAM TO THE TOP OF ANY SHAKE FOR FREE...JUST ASK!

- |  |                       |                 |                  |
|--|-----------------------|-----------------|------------------|
| <b>CLASSIC SHAKES</b>                    | <b>5.50</b>           |                 |                  |
| Vanilla, Strawberry, Chocolate or Banana |                       |                 |                  |
| <b>PREMIUM SHAKES</b>                    | <b>6.00</b>           |                 |                  |
| Bubblegum                                | Lemon                 | Peanut Butter   | Chocolate Orange |
| Oreo                                     | Coffee                | Biscoff         | Nutella          |
| Toffee                                   | Maple                 | White Chocolate | Salted Caramel   |
| Butterscotch                             | Mint                  | Mint Chocolate  | Mocha            |
| <b>DESSERT SHAKES</b>                    | <b>6.50</b>           |                 |                  |
| Cherry Bakewell                          | Lemon Meringue        |                 |                  |
| Toffee Apple                             | Strawberry Cheesecake |                 |                  |
| Banoffee                                 | Nutella Cheesecake    |                 |                  |
| Black Forest                             | Lemon Cheesecake      |                 |                  |

## HOT ROD SIGNATURE SHAKES

**7.00**

All of our signature shakes are topped with cream

- ELVIS**  
Fresh banana and peanut butter
- BLUE MOON**  
Oreo and bubblegum
- CHUNKY MONKEY**  
Fresh banana and chocolate
- THE MARILYN**  
White chocolate, salted caramel & biscoff biscuits
- MARATHON**  
Chocolate, peanut butter and salted caramel
- 'THE 99'**  
Vanilla shake with crumbled flake, nuts & strawberry sauce
- CEREAL KILLER**  
Vanilla shake loaded with Frosties